

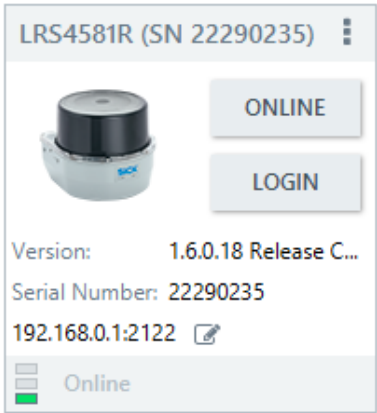
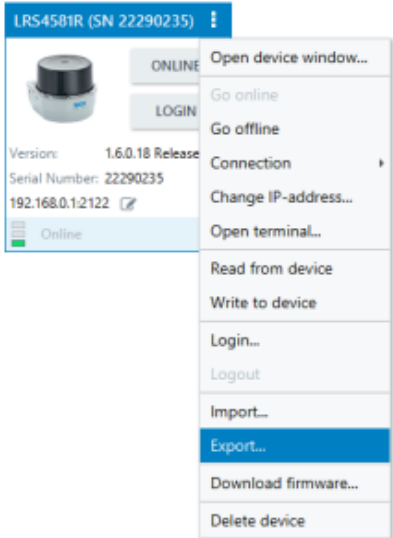
# NAV2xx - Firmware release information 1.x.x

- 1 [Update Instructions](#)
- 2
- 3 [General Information](#)
- 4 [Firmware V1.16.1](#)
  - 4.1 [New Features](#)
  - 4.2 [Improvements](#)
  - 4.3 [Bug fixes](#)
- 5 [Known issues](#)
- 6 [Contact us](#)
  - 6.1 [Product website](#)

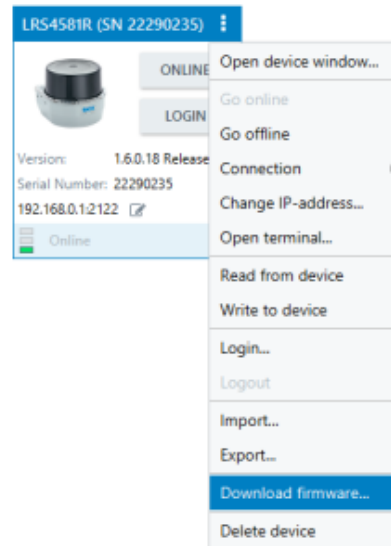


# Update Instructions

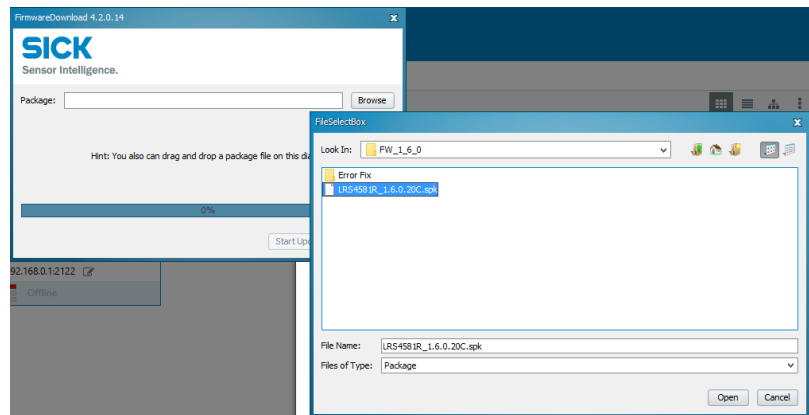
 Downgrade of firmware versions is not allowed and not possible!

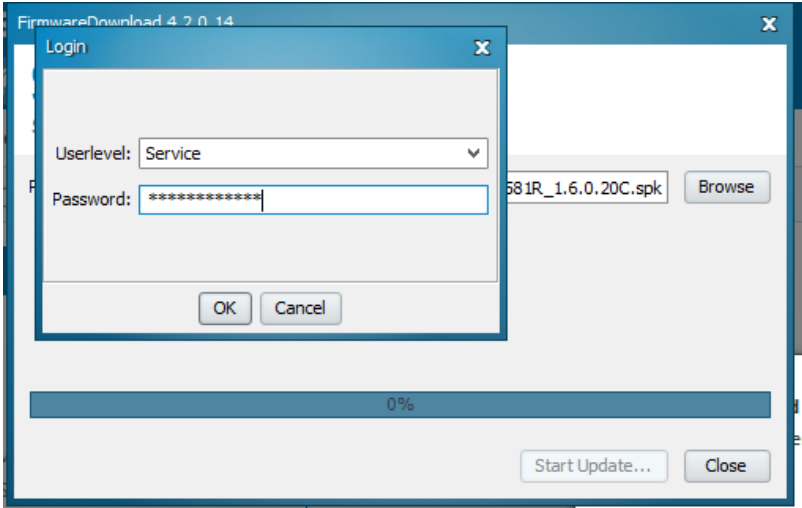
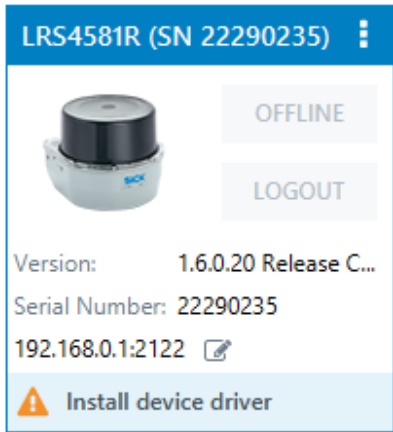
1	Save and unpack the firmware files on your local hard disk (please use full admin rights on your PC).	
2	Make sure your LiDAR is connected via Ethernet to your PC, in the same subnet and booted up. Power supply must remain stable during the update process.	
3	Use SOPAS ET or AppManager for firmware updates. The following instructions refer to SOPAS ET only.	
4	Search for the connected LiDAR and drag and drop the device into the SOPAS project.	
5	Recommendation: Save your parameter file (.sopas file) before you start the update.	

6 Open the settings and choose **Download firmware**.



7 Select the firmware package (.spk) and start the update process.



<p>8 Log-in to the LiDAR with user level: <b>Service</b> and password: <b>servicelevel</b></p> <p>The update procedure may take up to 2 minutes.</p>	
<p>9 Wait until the reboot is completed and the device LED turns green.</p>	
<p>10 Check the SOPAS window for the correct firmware version.</p> <p>Depending on the firmware update, the SOPAS ET device driver may need to be reinstalled by pressing "install device driver".</p>	
<p>11 Before the LiDAR is used for operation, ensure the device works as expected and that all parameters are set as intended.</p>	
<p>12 In case of uncertainty:</p> <ul style="list-style-type: none"> <li>• Set factory defaults in the device (user level "Service")</li> <li>• Load your parameter file (.sopas) in the device</li> </ul>	
<p>13 Done</p>	

# General Information

The provided firmware is valid for NAV210 as well as NAV245.

If possible try to update the device via Ethernet. A FW-Update via the Serial communication interface (RS232 or 422) takes a long time. Also uploading the sdd file from the device to SOPAS, should be done, if possible, via Ethernet or installing it via Internet or via downloaded sdd file from the TKB. Serial will work, but like by the FW-update , it takes along time.

---

# Firmware V1.16.1

## New Features

Firmware is now valid for NAV21x and NAV24x series.



## Improvements

-



## Bug fixes

-



## Known issues

No known issues



Contact us

Product website

<https://www.sick.com/nav2xx>